

LATENT DUCTS & ACCESSORIES

Mountbloccs

Airefrig Part Number	Description	Dimensions mm	List Price Excl GST
EXW38	White Mountbloc Supports 240Kg each (2 Mounts Per Set)	105 x 95 x 350	\$23.54
EXBW38		105 x 95 x 450	\$29.26
EXWA38		105 x 95 x 1000	\$41.00
INJW181	White End Caps suit Mountbloccs (4 Caps Per Set)		\$13.47
A12	Anchor Set suit Mountbloccs (4 Anchors Per Set)		\$34.99
AEROSTAND075	Machinery Mount (4 Stands Per Set) Max Load 50Kg per stand	100 x 50 x 75	\$20.22



EXW38



INJW181



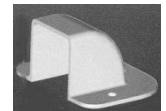
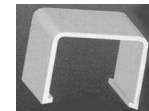
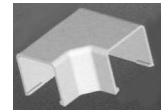
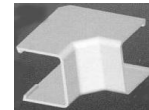
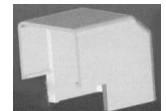
AEROSTAND075



A12

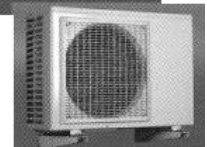
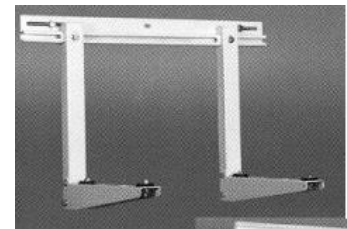
Drain Pipe Duct & Fittings

Airefrig Part Number	Description	Dimensions mm	List Price Excl GST
DPD	Drain Pipe Duct	32 x 30 x 2000	\$9.14
DPCI	Drain Pipe In Corner	35 x 32 x 57	\$2.03
DPCO	Drain Pipe Corner Out	35 x 32 x 47	\$2.03
DPFE	Drain Pipe Flat Elbow	35 x 32 x 65	\$2.03
DPC	Drain Pipe Connector	35 x 32 x 30	\$2.03
DPWC	Drain Pipe Wall Cover	35 x 32 x 63	\$2.03
DP96ROLL	Drain Pipe (50mtr Roll)	16, 18 & 20mm connections	\$61.87
DP96MTR	Drain Pipe (per metre option)	16, 18 & 20mm connections	\$1.72
CCY	"Y" Piece Connector	16 x 18 x 20	\$1.18

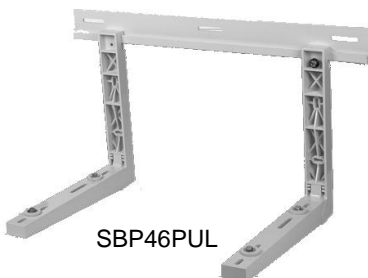


Wall & Roof Brackets

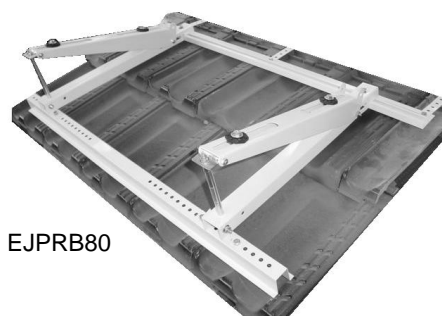
Airefrig Part Number	Description	Maximum Load Kg	Dimensions (L x D x H) mm	List Price Excl GST
EJP60	Adjustable Wall Bracket	60	700 x 380 x 450	\$86.04
EJP80		80	1050 x 490 x 590	\$98.08
ME150		150	750(H) x 650(D)	\$141.96
SBP46PUL	Composite Wall Bracket	80	790 x 460 x 410	\$137.08
EJPRB80	Adjustable Roof Bracket	80	1050 x 590 x 350	\$172.08



Roof Bracket, adjustable angle 3 to 30 degrees.



SBP46PUL



EJPRB80

PVC PIPE & FITTINGS

PVC Pressure Pipe

Airefrig Part Number	Description	Size mm	UOM	List Price Ex GST
15XCE	PVC Pipe	15	3.9 Metres	\$8.09
20XCE		20		\$12.94
25XCE		25		\$19.40
1100184	PVC Pipe	15	6 Metres	P.O.A.
1100249		20		P.O.A.
1100485		25		P.O.A.



PVC Fittings

1165001	Tee Piece	15	Ea	\$1.10
1165027		20	Ea	\$1.42
1165043		25	Ea	\$2.75



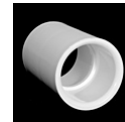
1162540	Elbow 90 Deg	15	Ea	\$0.73
1162582		20	Ea	\$1.21
1162647		25	Ea	\$1.94



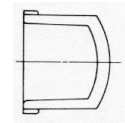
1162281	Elbow 45 Deg	15	Ea	\$1.21
1162304		20	Ea	\$2.02
1162320		25	Ea	\$2.34



1161722	Union	15	Ea	\$0.65
1161748		20	Ea	\$0.81
1161764		25	Ea	\$1.54



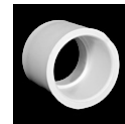
1161463	Cap	15	Ea	P.O.A.
1161489		20	Ea	\$4.20
1161502		25	Ea	\$4.85



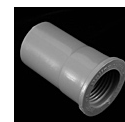
2109020015	Reducer	15 - 20	Ea	\$2.27
2109025020		20 - 25	Ea	\$4.53
1162079		20 - 40	Ea	P.O.A.



2110020015	Reducing Bush	15 - 20	Ea	\$0.97
2110025015		15 - 25	Ea	\$1.99
2110025020		20 - 25	Ea	\$2.59



1164649	Socket	20 x 3/4" F BSP	Ea	\$1.21
1164704		25 x 1" F BSP	Ea	\$2.75
1164039		15 x 1/2" M BSP	Ea	P.O.A.
1164063		20 x 3/4" M BSP	Ea	\$1.78
1164102		25 x 1" M BSP	Ea	\$2.59
2111015		15 x F 1/2" NPT - Grey	Ea	\$1.62
2111025		25 x F 1" NPT - Grey	Ea	P.O.A.



PVC PIPE & FITTINGS

Saddles

Airefrig Part Number	Description	Size mm	UOM	List Price Ex GST
1991028	Saddle	15	Ea	\$1.16
1991044		20	Ea	\$1.21
1991060		25	Ea	\$1.24



Barrel Union

Airefrig Part Number	Description	Size mm	UOM	List Price Ex GST
1167663	Barrel Union	20	Ea	\$13.75
1167671		25	Ea	\$14.55



P Trap

Airefrig Part Number	Description	Size mm	UOM	List Price Ex GST
EZ113	P Trap	20	Ea	\$32.90
EZT406	Flexible brush for EZ113 P Trap		Ea	\$11.37



40mm Drain Pipe & Fittings

Airefrig Part Number	Description	Size mm	UOM	List Price Ex GST
1253587	Junction 85 Deg	40	Ea	\$15.61
1253561	Junction 45 Deg		Ea	\$12.18
1252387	Bend 45 Deg		Ea	\$5.58



Solvents

Airefrig Part Number	Description	Size mm	UOM	List Price Ex GST
1990129	Solvent	500 ML	Ea	\$16.98
1990323	Primer		Ea	\$32.20



Clear Vinyl Tube

Airefrig Part Number	Description	Size mm	UOM	List Price Ex GST
PVC3MMROLL	Clear Vinyl Tube	3 ID	30 Metre Roll	P.O.A.
PVC4MMROLL		4 ID		P.O.A.
3220207		6 ID	Metre	\$2.48
3220257		8 ID		\$2.99
3220304		10 ID		\$3.48

