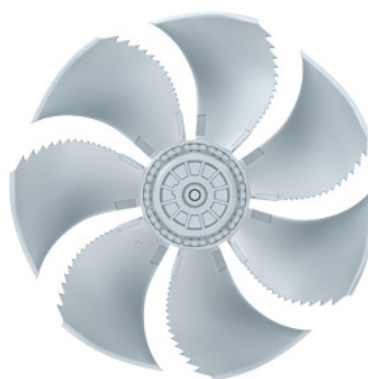


Movement by Perfection



The Royal League in ventilation, control and drive technology



### Product documentation

Type  
FN050-VDA.4I.A7P1

Article number  
162025

## Product documentation

Customer  
enter here

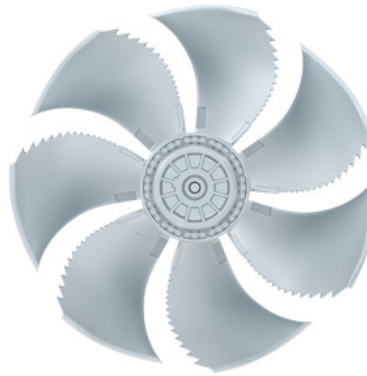
ZIEHL-ABEGG Contact  
Anthony Mamo  
Tel.

Project  
enter here

ZIEHL-ABEGG Subsidiary  
Australia  
ZIEHL-ABEGG Australia Pty Ltd (VIC)  
181 Calarco Drive  
Derrimut  
VICTORIA 3030  
AUSTRALIA  
Phone +61 3 99310899  
Fax +61 3 99310499  
[www.ziehl-abegg.com.au](http://www.ziehl-abegg.com.au)  
[info@ziehl-abegg.com.au](mailto:info@ziehl-abegg.com.au)

Type  
FN050-VDA.4I.A7P1

Article number  
162025



### Contents

1.	Product specification	3
2.	Characteristic curve	<b>Error! Bookmark not defined.</b>
3.	Characteristic Curve	4
4.	Drawing	5
5.	Connection diagram	6
6.	EU-Declaration of conformity	7

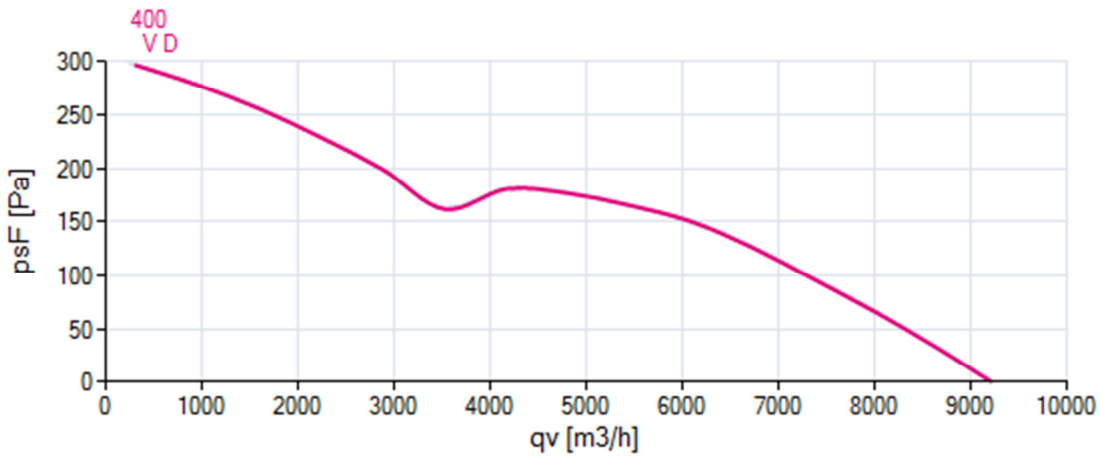
### 1. Product specification

#### Technical data

<b>Article number</b>	162025
<b>Type</b>	FN050-VDA.4I.A7P1
<b>Designation</b>	Axial fan with sickle blades
<b>Rated values</b>	3~400V±10% D/Y 50Hz P <sub>1</sub> 0,84/0,54kW 1.45/ 0.96A ΔI=15% 1340/ 940/min COSY 0,80 70°C
<b>Electrical connection</b>	Cable box D02 with cable lateral 9x 0,5 mm <sup>2</sup> , 65 cm
<b>Min. operating temperature °C</b>	-40
<b>Cable quality</b>	Li4G4G-J
<b>Type of protection</b>	IP54
<b>Thermal class</b>	THCL155
<b>Connection diagram</b>	1360-108XB
<b>Rating plate</b>	1x fixed
<b>Fitting position</b>	H/Vu/Vo
<b>Motor protection</b>	thermal contact
<b>Impregnation</b>	Moisture and hot climate protection
<b>Quality of bearings</b>	ball bearing with long-time lubrication
<b>Material Rotor</b>	Aluminium
<b>Painting rotor</b>	unpainted
<b>Material blades</b>	Aluminium
<b>Painting impeller</b>	unpainted
<b>Other</b>	Balancing quality G 4,0
<b>Weight kg</b>	11,20
<b>ErP Data</b>	Efficiency $\eta_{statA}$ : 34,2 % Efficiency: $N_{actual} = 41,3 / N_{target} = 40^*$ *ErP 2015

## 2. Characteristic Curve

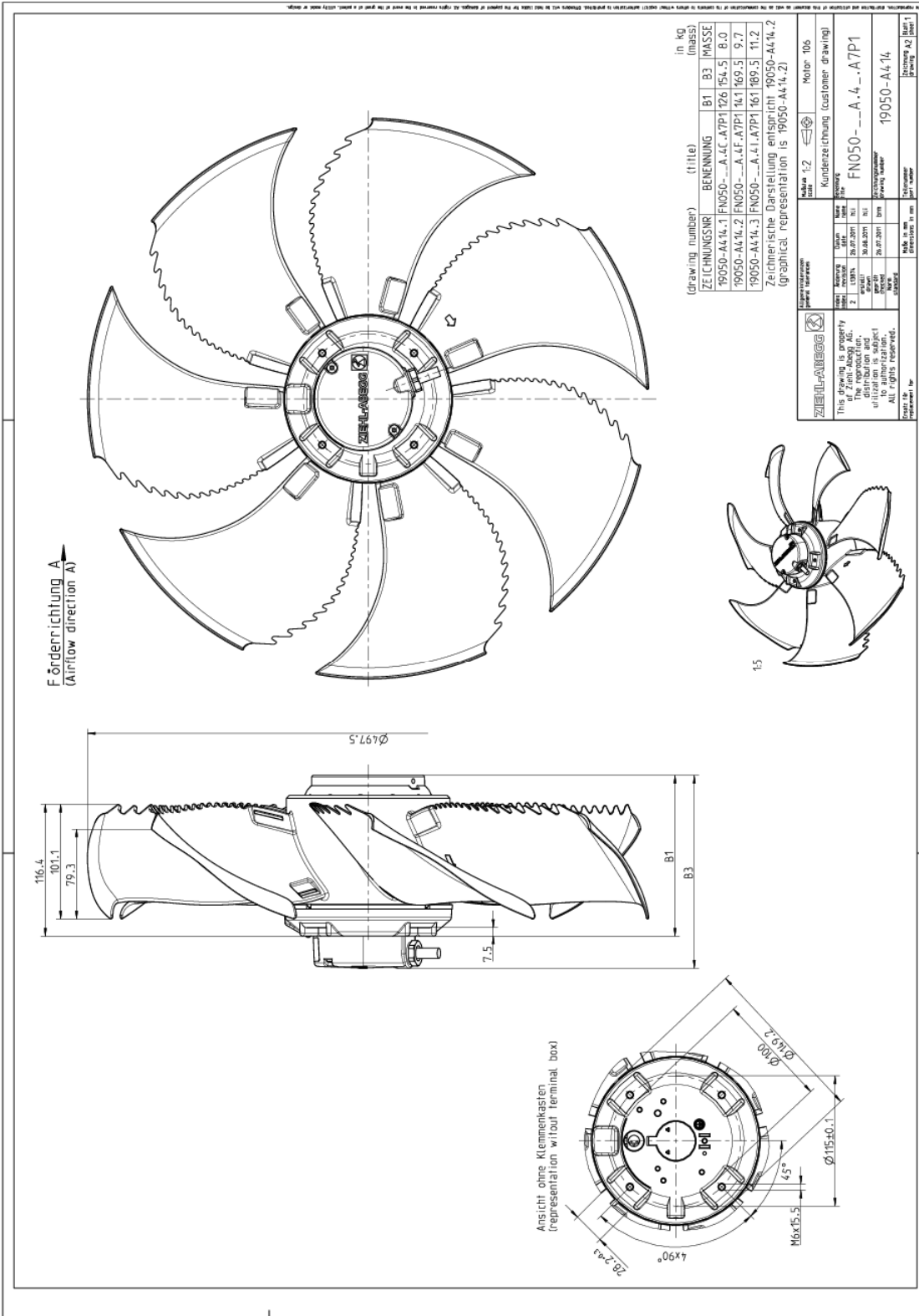
### Air performance



Please note: It's not allowed to use this fan in the stall area!\*

\*In doubt please ask your responsible ZIEHL-ABEGG sales contact.

## 3. Drawing



Dimensions in mm

Shown drawing is just to show the dimensions of the fan.

www.ziehl-abegg.com  
15/03/2017 3:09:23 PM

Movement by Perfection | Bewegung durch Perfektion

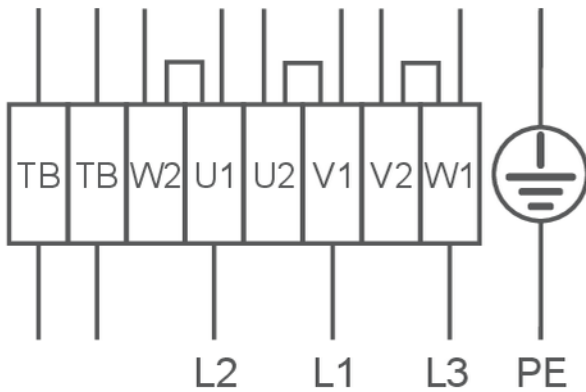
### 4. Connection diagram

#### 1360-108XB

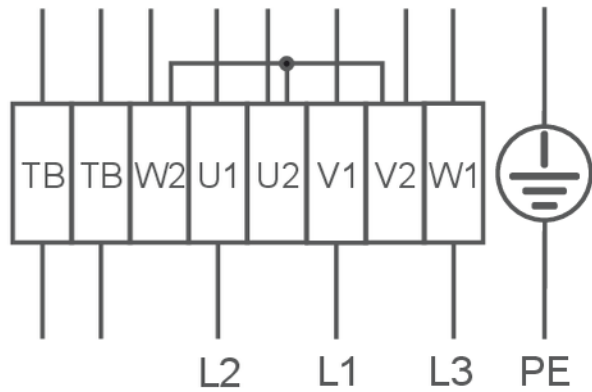
3~ motor, 2 speeds ( $\Delta$ /Y switch over) with thermostatic switch (if built in). Without bridge when using speed change-over switch.

- U1 brown
- V1 blue
- W1 black
- U2 red
- V2 grey
- W2 orange
- TB white

High speed/ $\Delta$ -connection



Low speed/Y-connection



### 5. EU-Declaration of conformity

#### EC-Declaration of conformity

- Translation -  
(english)  
ZA75-GB 1616 Index 011  
00285644-GB

**Manufacturer:** ZIEHL-ABEGG SE  
Heinz-Ziehl-Straße  
74653 Künzelsau  
Germany

The manufacturer is solely responsible for issuance of the declaration of conformity.

#### The products:

- External rotor motor MK.., MW..
- Axial fan FA.., FB.., FC.., FE.., FF.., FS.., FT.., FH.., FL.., FN.., FV.., DN.., VR.., VN.., ZC.., ZF.., ZN..
- Centrifugal fan RA.., RD.., RE.., RF.., RG.., RH.., RK.., RM.., RR.., RZ.., GR.., ER..
- Cross-flow fan QK.., QR.., QT.., QG..

#### The engine type:

- Asynchronous internal or external rotor motor
- Asynchronous internal or external rotor motor with integrated frequency inverter, except EDP system
- Electronically commutated (EC) internal or external rotor motor
- Electronically commutated internal or external rotor motor with integrated EC Controller, except EDP system

#### These products comply with the following EU directives:

- EMC Directive 2014/30/EU
- Low voltage directive 2014/35/EU
- ErP Directive 2009/125/EC, in conjunction with Regulation (EU) no. 327/2011

#### The following harmonized standards are in use:

EN 60034-1:2010 + Cor.:2010                      EN 61000-6-3:2007 + A1:2011 + AC:2012  
EN 60204-1:2006 + A1:2009 + AC:2010        EN 61000-6-2:2005 + AC:2005  
EN 60529:1991 + A1:2000 + A2:2013

Compliance with the ErP Directive 2009/125/EC does not refer to external rotor motors MK.., MW..

All ErP-relevant information comprises measurements which are determined using a standardised measurement set-up. More details can be obtained from the manufacturer.

Compliance with the EMC Directive 2014/30 / EU refers only to those products when they are connected by mounting / operating instructions . If these products are integrated into a system or supplemented with other components (eg. sensing controls) and operated , the manufacturer or operator is responsible of the overall system for compliance with the EMC Directive 2014/30 / EU .

Künzelsau, 20.04.2016  
(Location, date of issue)

ZIEHL-ABEGG SE  
Dr. W. Angelis  
Technical Director Air Movement Division  
(Name, Function)



(Signature)

ZIEHL-ABEGG 



The Royal League in ventilation, control and drive technology

## Intelligent control technology for any application

**ZIEHL-ABEGG system capabilities:**  
Everything from a single source – perfectly matched for optimal performance

Please contact us. We would be pleased to design an individual solution for your requirements.

We would like to welcome you on our worldwide exhibitions. Please find our next exhibitions [here](#).