

WEA-L Water Defrost Low Temperature Series Evaporators

The **Karyer WEA-L** series are water defrost evaporators which are specially designed for a wide variety of commercial low temperature refrigeration applications such as freezer rooms.

The WEA-L series evaporators have a professional and fresh white case finish that will compliment any installation project in the Australian marketplace.

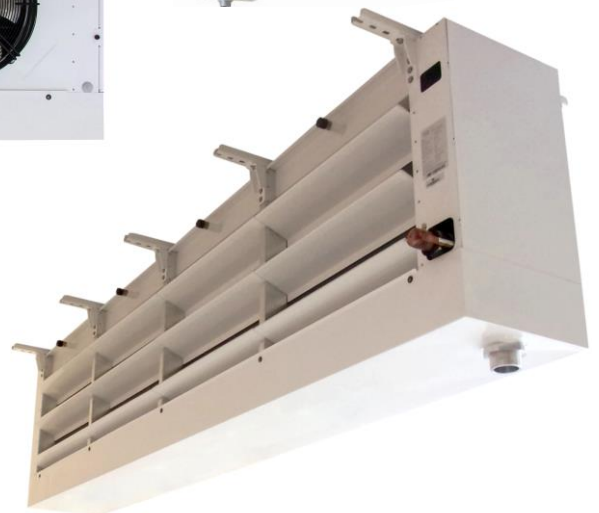
These evaporators are designed with optimum tube diameters that ensure the smallest refrigerant charges coupled with maximum increased efficiency and excellent oil return.

The 7.0mm fin spacings offered have been selected to ensure a finely tuned balance that will provide trouble free operation with the most efficient cooling effect for correctly engineered applications.

The three phase AC evaporator fan assemblies are ebm who are renowned worldwide for quality and reliability. These fan motors have been selected in 500mm diameters specifically to match what has been considered standard sizing and most commonly used for many years in the Australian market.

The WEA-L series standard features:

- Factory fitted with EVD-ice Z valves including Ultra Cap
- Stainless Steel fittings (screws, nuts & bolts etc)
- White powder coated aluminium case panels
- White powder coated flush mounting feet
- Standard coils are designed for multiple refrigerants
- High performance circuitry with Venturi-type distributor technology
- Aluminium fins and high-performance copper tube for excellent heat transfer
- Generous 7.0mm fin spacings
- Access doors aluminium powder coated on both ends - hinged and removable
- High quality three phase 500mm ebm AC fan motor assemblies
- Fan motors are pre-wired back to electrical connection boxes



KARYER WEA-L SERIES EVAPORATORS

Water Defrost Evaporators - Low Temperature

Fan Diameter: 500mm

Based on -24°C Saturated Suction Temperature

Fin Spacing: 7.0mm

Model		WEAL185W2500EVD	WEAL226W3500EVD	WEAL272W3500EVD	WEAL308W4500EVD
R404A	Watts 6ktd	18528	22602	27222	30816
	Watts 1ktd	3088	3767	4537	5136
R507	Watts 6ktd	17970	21924	26400	29892
	Watts 1ktd	2995	3654	4400	4982
R449A	Watts 6ktd	17418	21246	25590	28968
	Watts 1ktd	2903	3541	4265	4828
R448A	Watts 6ktd	17598	21474	25860	29280
	Watts 1ktd	2933	3579	4310	4880
Air Flow	(m ³ /hr)	13594	21873	20391	29163
Air Throw	(metres)	19.2	21.5	20.1	22.5
500mm Fans	(Qty)	2	3	3	4
400/3/50Hz AC (Δ Delta) Fan Motors	Total Watts	1680	2520	2520	3360
	Total Amps	2.9	4.35	4.35	5.8
Refrigerant Connections	Outlet (inch)	2-1/8"	2-1/8"	2-1/8"	2-1/8"
	Inlet (inch)	1-1/8"	1-1/8"	1-1/8"	1-5/8"
Water Connections	Inlet (mm)	2 x 32.0	3 x 32.0	3 x 32.0	4 x 32.0
Drain	outlet (mm)	80.0	80.0	80.0	80.0
Tube Volume	(dm ³)	28.0	31.5	41.3	42.0
Dry Weight	(kg)	173	212	310	276
Overall Dimensions (mm)	Width	2007	2857	2857	3707
	Depth (incl. pipes & fan)	797	702	797	702
	Height (high end of pan)	932	932	932	932
Dimension Diagram		WDD10	WDD11	WDD11	WDD12

KARYER WEA-L SERIES EVAPORATORS

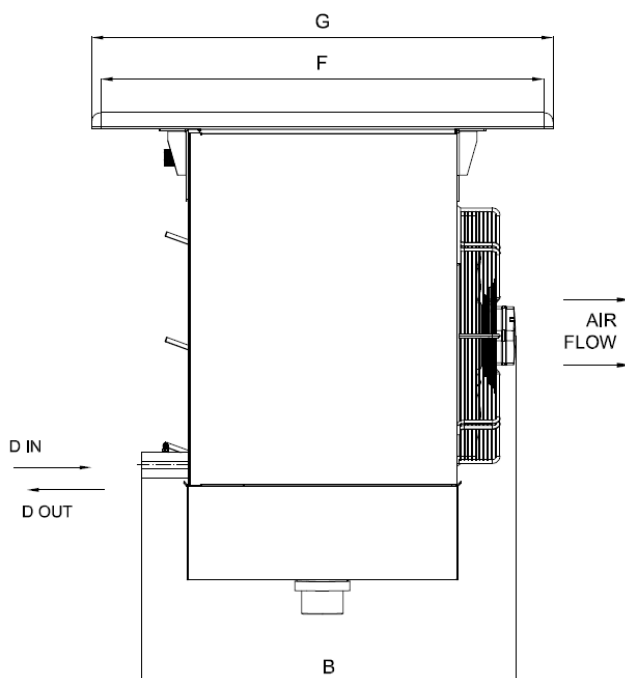
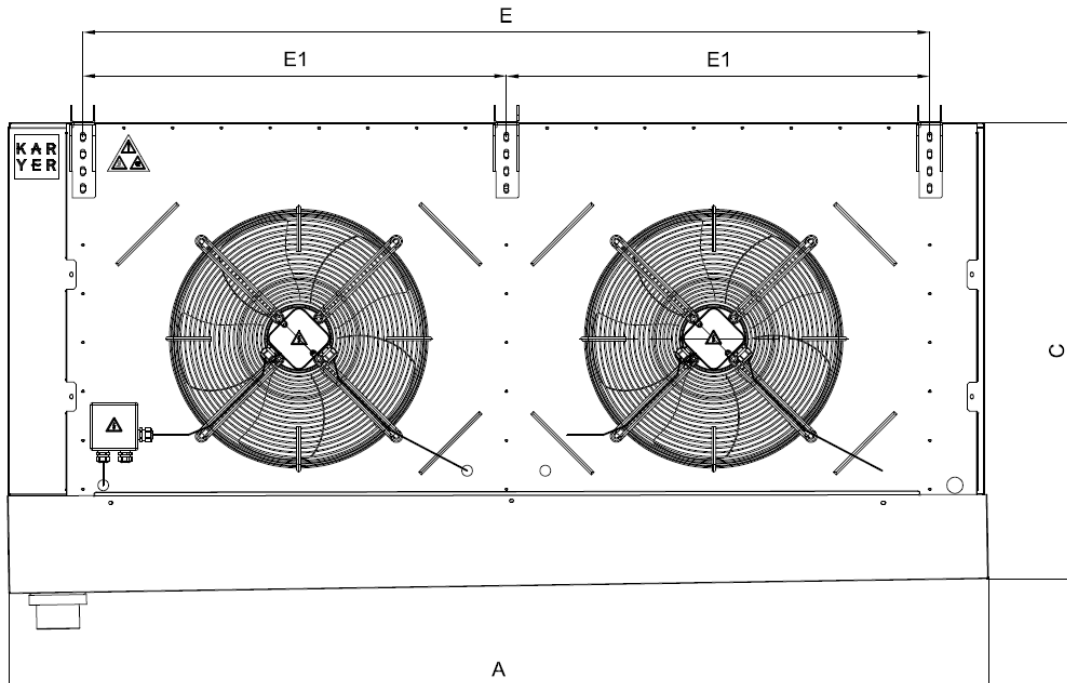
Water Defrost Evaporators - Dimensions

Dimension Diagram: WDD10

Evaporator Model (2 x 500mm Fans)	A (mm)	B (mm)	C (mm)	E (mm)	E1 (mm)	F (mm)	G (mm)	Drain Connection
--------------------------------------	-----------	-----------	-----------	-----------	------------	-----------	-----------	---------------------

Low Temperature

WEAL185W2500EVD	2007	797	932	1735	867.5	945	985	80mm
-----------------	------	-----	-----	------	-------	-----	-----	------



KARYER WEA-L SERIES EVAPORATORS

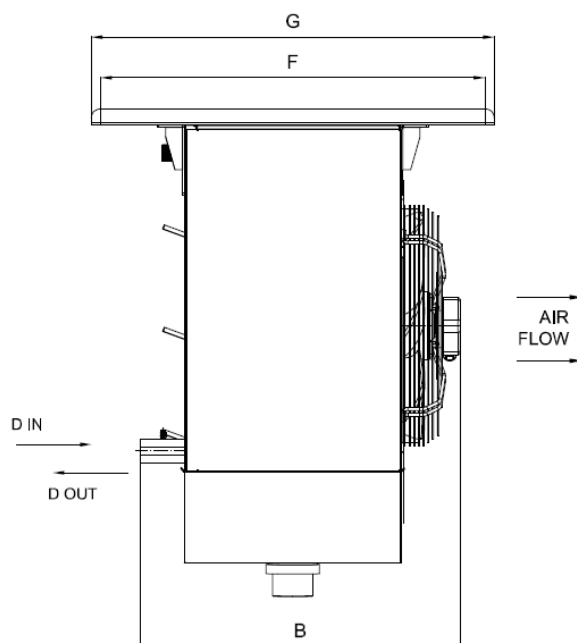
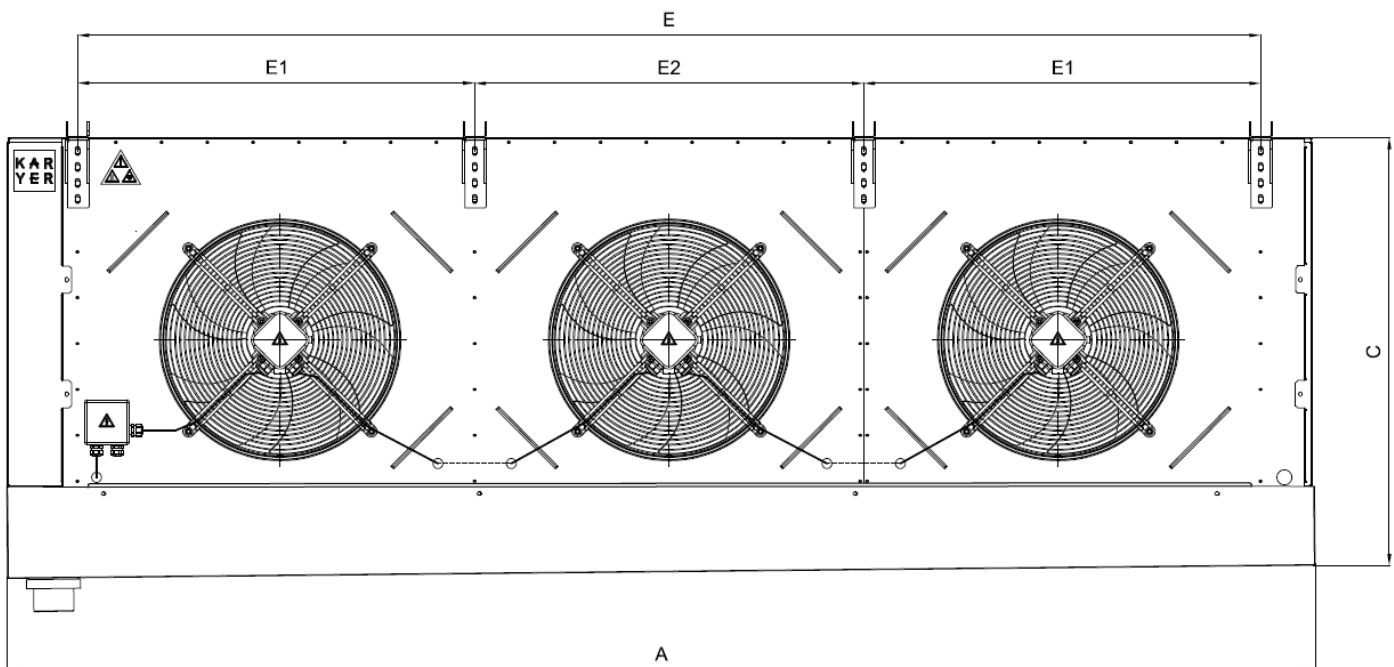
Water Defrost Evaporators - Dimensions (cont'd)

Dimension Diagram: WDD11

Evaporator Model (3 x 500mm Fans)	A (mm)	B (mm)	C (mm)	E (mm)	E1 (mm)	E2 (mm)	F (mm)	G (mm)	Drain Connection
--------------------------------------	-----------	-----------	-----------	-----------	------------	------------	-----------	-----------	---------------------

Low Temperature

WEAL226W3500EVD	2857	702	932	2585	867.5	850	845	885	80mm
WEAL272W3500EVD	2857	797	932	2585	867.5	850	945	985	80mm



KARYER WEA-L SERIES EVAPORATORS

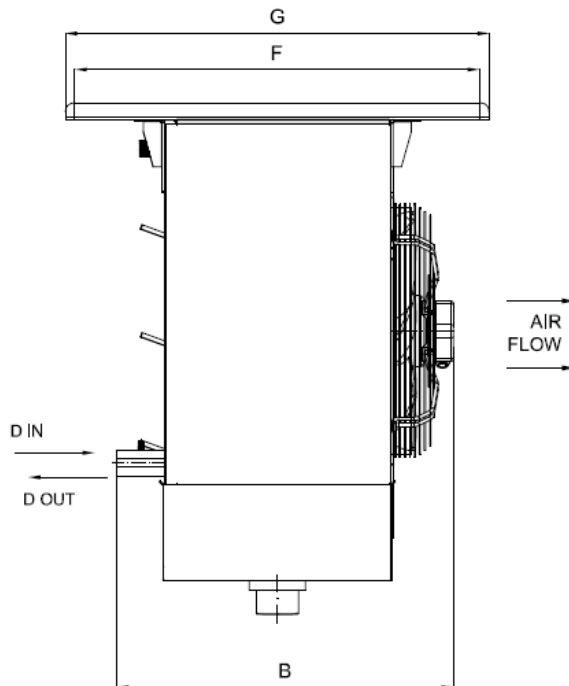
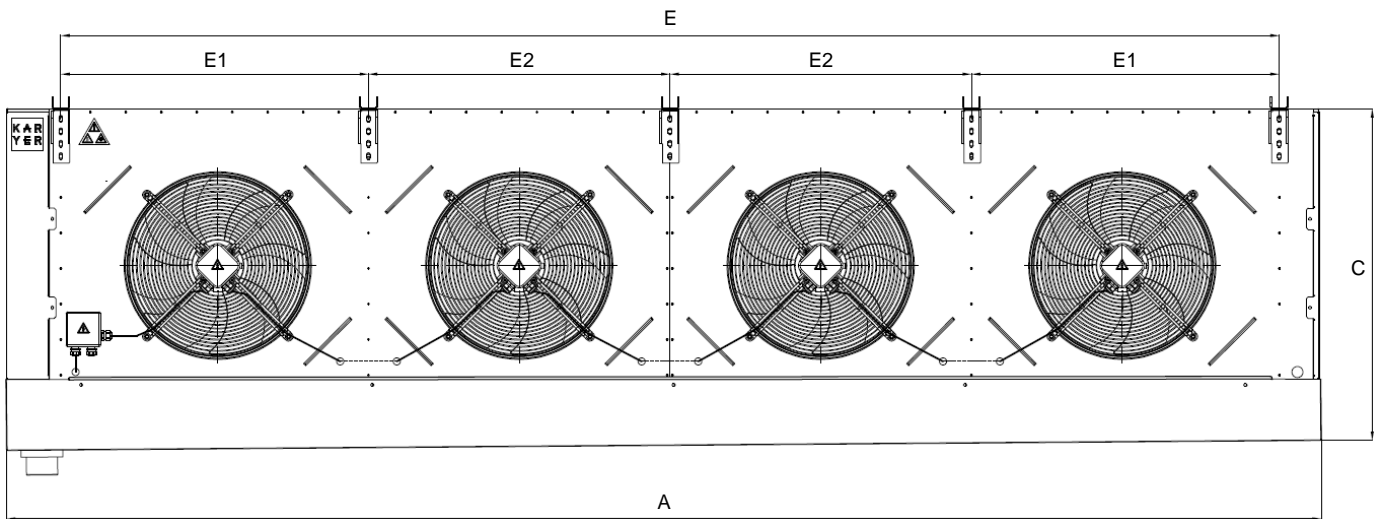
Water Defrost Evaporators - Dimensions (cont'd)

Dimension Diagram: WDD12

Evaporator Model (4 x 500mm Fans)	A (mm)	B (mm)	C (mm)	E (mm)	E1 (mm)	E2 (mm)	F (mm)	G (mm)	Drain Connection
--------------------------------------	-----------	-----------	-----------	-----------	------------	------------	-----------	-----------	---------------------

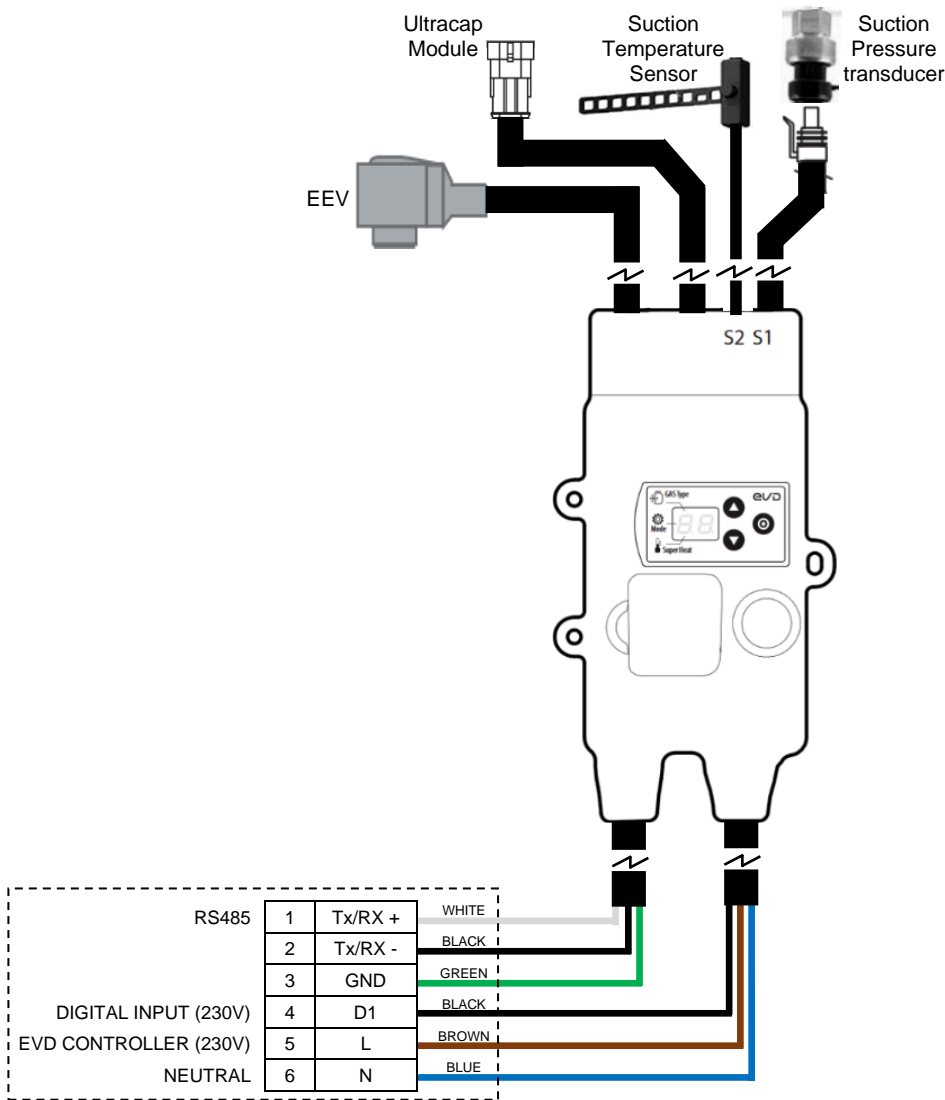
Low Temperature

WEAL308W4500EVD	3707	702	932	3435	867.5	850	845	885	80mm
-----------------	------	-----	-----	------	-------	-----	-----	-----	------

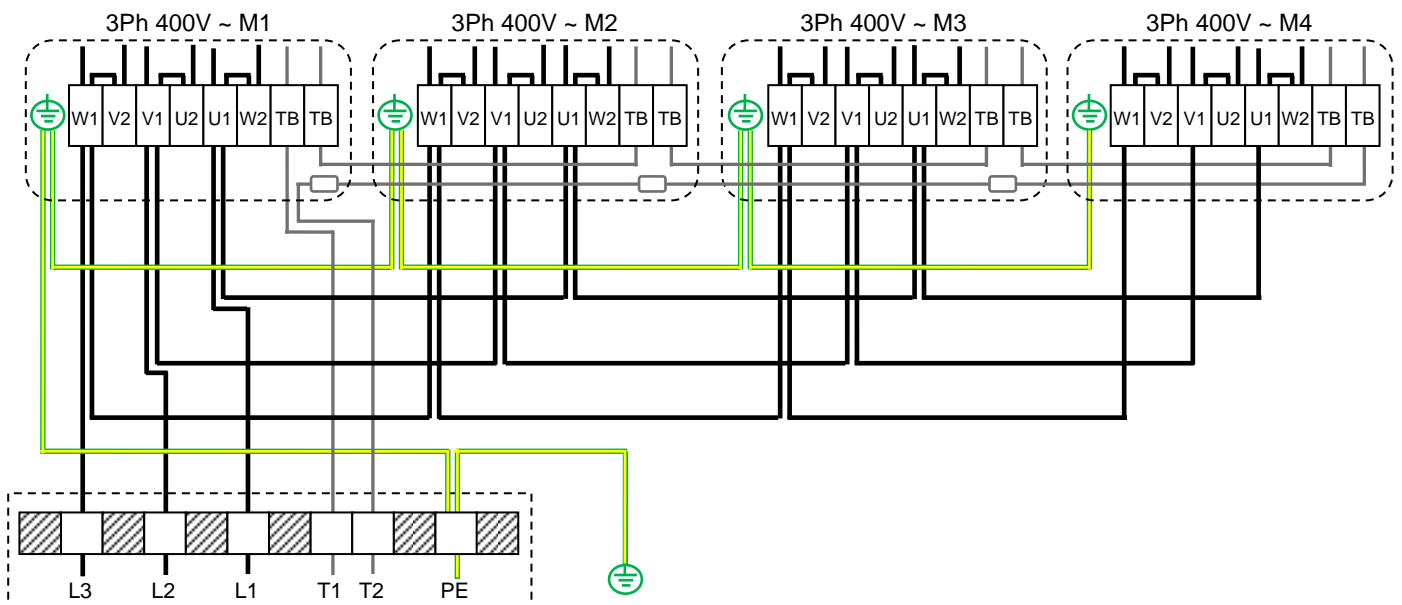


KARYER WEA-L SERIES EVAPORATORS

Evaporator EVD-ice Wiring - Factory Wiring



Evaporator Fan Motor - Factory Wiring



KARYER WEA-L SERIES EVAPORATORS

Water Defrost Evaporators - Spare Parts

Water Defrost Evaporator Models	Fan Motors		Drain Pan	Two Hinge Side Panels	
	Part Number	Qty		Header Side	Opposite Side (non-header)
WEAL185W2500EVD	S4D500AM0301 (original motor: S4D500-AE03-01)	2	D150860	D150848	D150849
WEAL226W3500EVD	S4D500AM0301 (original motor: S4D500-AE03-01)	3	D144676	D144671	D144672
WEAL272W3500EVD	S4D500AM0301 (original motor: S4D500-AE03-01)	3	D150847	D150848	D150849
WEAL308W4500EVD	S4D500AM0301 (original motor: S4D500-AE03-01)	4	D150854	D144671	D144672

Water Defrost Evaporator Models	EVD-ice Valves				
	Valve Cartridge	Driver Module	Ultracap Resin Module	Replacement Motor / Stator	Pressure Transmitter
WEAL185W2500EVD	E3V45SWR70 (hermetic E3V)	EVDM011S60	EVDMU00R10	E3VSTA0350	SPKT0013P3
WEAL226W3500EVD	E3V55SWRC0 (hermetic E3V)	EVDM011S60	EVDMU00R10	E3VSTA0350	SPKT0013P3
WEAL272W3500EVD	E3V55SWRC0 (hermetic E3V)	EVDM011S60	EVDMU00R10	E3VSTA0350	SPKT0013P3
WEAL308W4500EVD	E3V55SWRC0 (hermetic E3V)	EVDM011S60	EVDMU00R10	E3VSTA0350	SPKT0013P3

KARYER WEA-L SERIES EVAPORATORS

Water Defrost Evaporators - Shipping Dimensions & Weights

Low Temperature Evaporator Models	Shipping Packaged Dimensions			Shipping Weight (Kg)
	Depth (mm)	Width (mm)	Height (mm)	
WEAL185W2500EVD	107	214	120	228
WEAL226W3500EVD	97	299	120	282
WEAL272W3500EVD	107	299	120	380
WEAL308W4500EVD	97	384	120	366